



CASE STUDY

Paint Booth Decon & Demo

DESCRIPTION

E&E was contracted to demolish two large, commercial paint booths. The booths were previously used to paint large aircraft parts. The paint used to coat the parts consisted of many hazardous chemicals including Chromium 6, and other high-profile chemicals of concern. Special care was taken to safely decontaminate all affected surfaces prior to the demolition of the booths. E&E repaired all roof penetrations left from the demolished paint booth stacks and filtrations systems. Finally, the concrete beneath the booths was backfilled and resurfaced with 5000 psi concrete.

MAIN TASKS

- Decontaminate all areas prior to demo of structure.
- Isolate, remove, or relocate surrounding utilities and utilities related to the paint booth.
- Erection of plastic sheet barriers and dust monitoring during demolition
- Utilities locked out, tagged out, removed or relocated.
- Demolish structures including exhaust stacks and roof structures.
- Prevent disruption of surrounding production facilities

CHALLENGES

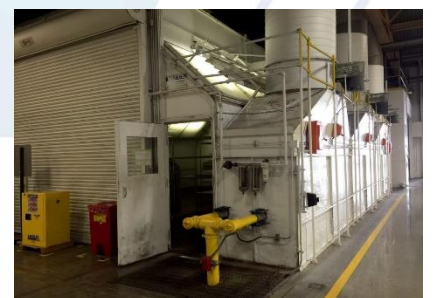
Containment – Situated in an active paint preparation portion of an aerospace production line, it was imperative that zero dust or other contamination migrated beyond the exclusion zone. E&E engineered a methodology to utilize two preexisting paint booth structures to provide self-containment, through which all debris were processed. The preexisting sumps and pumps were to utilize safely port contaminated liquids to vacuum trucks and drums for disposal.

Safety – The larger paint booth had to be demolished in a working area of the main building of the facility. Special care had to be taken to protect the surrounding workers. Plastic sheeting and strict dust monitoring were implemented throughout the project to ensure on-going production was not interrupted.

Structural – Adjacent and attached to the paint booth was a room that shared a common roof deck structure. This structure was cantilevered which required E&E to modify the structure to provide contract support to the remaining roof and booth.

INTERESTING POINTS

E&E repurposed the main structure of a booth to decontaminate other structural components of the booths. This reuse allowed E&E to better control dust dispersion and rinse-ate disposal throughout the duration of the project.



**Engineering &
Environmental**
CONSTRUCTION

Call +1 714 897 8705

info@eandeconstruction.com

www.eandeconstruction.com

