



CASE STUDY

UST Removal

DESCRIPTION

For a utility company in Los Angeles County, E&E was initially contracted to clean and remove a concrete sump/clarifier. However, after embarking upon the initial excavation tasks, it was quickly discovered that the subject item for removal was not a sump/clarifier and was in fact a much larger, 10,000-gallon, fiberglass, underground storage tank. Once the contents and volume of the tank were determined and quantified, E&E worked with local regulatory agencies to obtain the proper permits. E&E subsequently performed the excavation around the tank, then properly cleaned and certified the vessel, ready for removal and destruction. Once proper sampling and analysis had been performed, the excavation was cleared for backfill with certified clean soils, compaction to 90% per the contract requirements and final resurfacing to match existing surroundings.

MAIN TASKS

- Erection of protective fencing around proposed excavation site.
- Obtain necessary permits to conduct the excavation.
- Prepare tank for cleaning by using non-sparking tools to cut access holes into tank.
- Conduct a triple-rinse of contaminated tank.
- Use 5,000-gallon vacuum truck to collect rinseate and haul away for proper disposal.
- Excavation and removal of UST
- Sampling of excavation side walls and floor as directed by local fire department for analysis by local laboratory.
- Sloping of excavation side walls at 2:1 ratio and installation of high visibility fence to delineate exclusion zone for public safety.

CHALLENGES

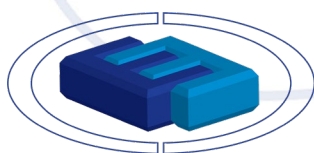
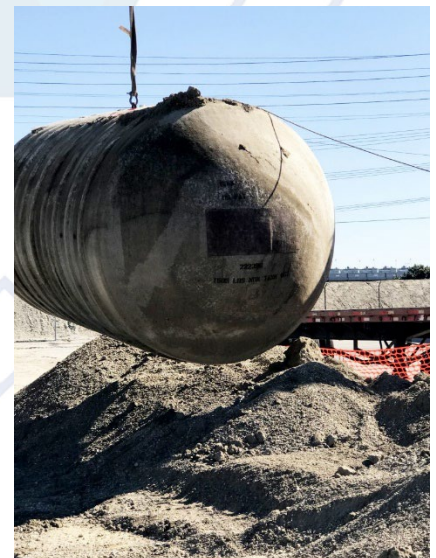
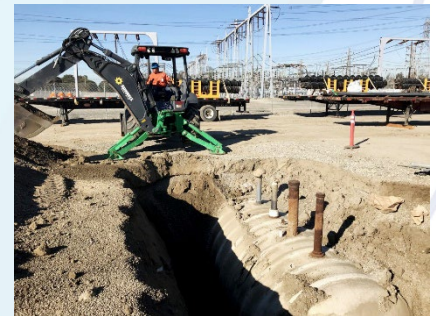
Safety – Underground high voltage cable ran perpendicular to the excavation site.

Coordination – The presence of other contractors, performing work concurrently necessitated the identification and personal introduction to all relevant team leads, and the scheduling inter-communications and the sharing of Site-Specific Health and Safety Plans between construction teams a priority.

Training & Permits – Site-specific training and permits were required daily.

INTERESTING POINTS

E&E was originally contracted to remove a concrete sump/clarifier. It was discovered that the tank was in fact a fiberglass UST and much larger than expected. E&E was able to react accordingly and modify its approach to complete the project without creating an adverse impact on the client's schedules.



**Engineering &
Environmental**
CONSTRUCTION

Call +1 714 897 8705

info@eandeconstruction.com

www.eandeconstruction.com

